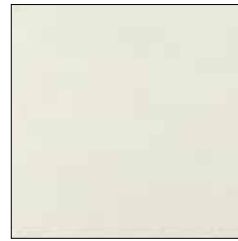


IKON EXTREMA

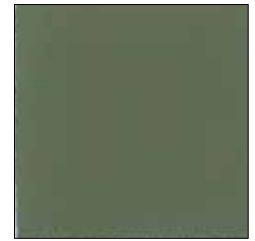
Synthetic Leather



G



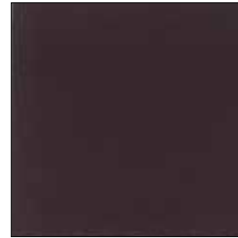
KE10



KE09



KE06



KE01



KE02



KE03



KE04



63% PU
29% COT
8% PES



480 g/m²



BS 5852 CRIB 5
BS 5852-1 PART 1
IMO resolution A.652 (16): 1989
EN 1021-2
UNI 9175 classe 1 IM
TB 117 sez. E - p. 1 (California)



UNI EN ISO 12947 - 2
150.000 Cicli/Cycles



EN ISO 105 B02 (5-6)



WATERPROOF



NO PHTHALATES



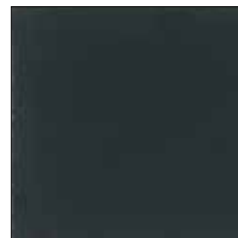
ANTI-FUNGAL
TREATMENT



KE05



KE07



KE11



KE08